



FARM ENVIRONMENTAL CONTROL
EQUIPMENT MANUFACTURER

PRIMARY FILTER & SUB - HIGH EFFICIENCY FILTER

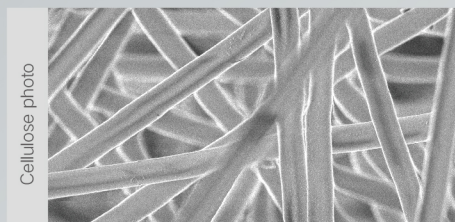


Product features

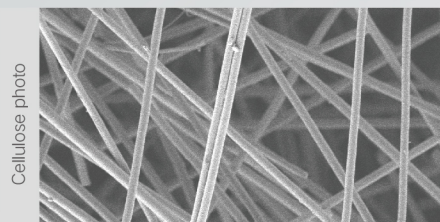
Type: G4 primary folded pre-filter
 Filter material: Cotton fiber blended material
 Frame material: Aluminum alloy frame
 Recommended final resistance: 250pa
 Continuous stable operating temperature: Not higher than 80°C
 Moisture resistance: 90%RH

Product features

Type: Sub-high Efficiency Epidemic Prevention Main Filter-4V
 Filter material: Glass fiber filter paper
 Frame material: ABS plastic assembled frame
 Separator: Hot melt adhesive
 Recommended final resistance: 500pa
 Continuous stable operating temperature: Not higher than 90°C
 Moisture resistance: 90%RH



2 μm EHT=2.00kV Signal A=SE2 WD=4.6mm



10 μm EHT=2.00kV Signal A=SE2 WD=4.6mm

Technical Parameters of Primary Filter

Series	Width*Height mm	Depth mm	Filter classification			Operating air flow CMH	Initial pressure drop Pa@1.0m/s	Net weight Kg
			ASHRAE (52.2-1995)	EN779:2012	ISO16890 :2016			
Wusen-G4	592*592	45	MERV8	G4	92%	1000	16	0.6
Series		Width*Height mm	Depth mm		Net weight Kg			
Filter mounting frame-70		610*610	70		2			
Filter mounting frame-95		610*610	95		2.8			

Parameters of Sub-high Efficiency Filter

Series	Width*Height mm	Depth mm	Filter classification			Operating air flow CMH	Initial pressure drop Pa@1.0m/s	Net weight Kg
			ASHRAE (52.2-1995)	EN779:2012	ISO16890 :2016			
Wusen-4V	592*592	292	MERV15	F9	90%@0.3 μm	1000	23	7.2
Wusen-4V	592*592	292	MERV16	H10	95%@0.3 μm	1000	30	7.3

FARM AIRCLEAN - WUSEN-5S

BIOLOGICAL AIR CLEANING



Deodorization gutter

Grid Deodorization Filter Material

Quick installation & easy construction

On site installation is fast, construction is very convenient, and at the same time, it saves shipping costs, time, and effort. Compared with infrastructure construction, it can move quickly, is not easy to waste, and saves construction costs.

New raw materials

Acid and alkali resistant, resistant to the erosion of various chemicals, no need to worry about corrosion during use.

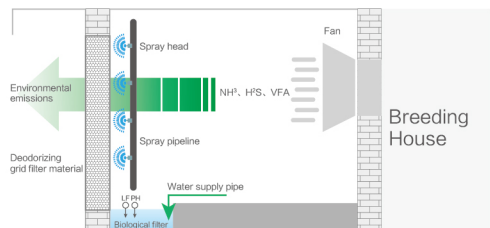
Fine workmanship resistant to impact and impact

Plastic deodorizing water tank has bending resistance and strong impact toughness, which is not easy to break or damage.

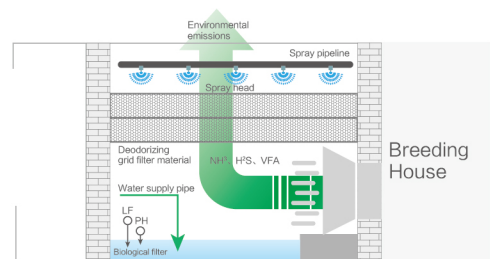
Save construction costs

Compared to brick masonry and concrete pouring water collection tanks, it greatly reduces labor costs and can save about 2-3 times labor costs.

Deodorization mode



Schematic diagram of horizontal ventilation deodorization mode



Schematic diagram of vertical ventilation deodorization mode

PLASTIC FRAME GUTTER COOLING SYSTEM

Wusen cold maker cooling system is a modular PVC frame system: it is specially designed for the cooling system of farms and greenhouses. This is an innovative fully enclosed water pad frame system, with the lowest installation requirements, simple maintenance, and easy to replace the cooling water pad.

All made of plastic, without rusting metal frames in the external environment. No external water tank is required, and the system can be built and installed according to the project site size, suitable for any length of plastic cooling pads or paper cooling pads.

- Easy to install.
- The lower collection gutter is used as a water reservoir. There is no need for a groundwater tank.
- When the water level drops, the floating system allows automatic refilling.
- Modular structure, adjustable length and height.
- Due to the use of a special locking system, the water cooling pad can be easily installed and unloaded.
- The system includes a wide range of drainage for cleaning the drainage ditch.
- PVC raw materials have UV resistance.
- More durable than other metal frame cooling systems.
- Complete anti-rust system.



PP/PVC PLASTIC COOLING PAD

Wusen Plastic Cooling Pad is a new product developed on the basis of the application of paper cooling pads, manufactured via PP/PVC injection molding or extrusion. This plastic cooling pad not only retains the cooling effect of paper cooling pads but also boasts properties such as water corrosion resistance, mildew resistance, and insect resistance. Its normal service life can reach more than 10 years.

Due to the long service life of the plastic cooling pad, there is no need to replace the pad itself during use, which significantly reduces the material costs and high labor costs that customers would otherwise incur for replacing cooling pads.

Characteristic

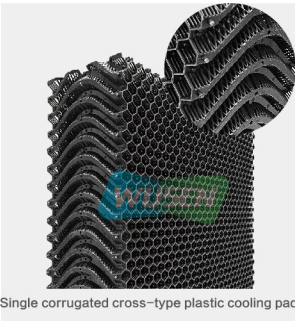
- CoolPads consist of polypropylene and are therefore easy to clean and highly robust.
- Available in standard dimensions 600 / 900 / 1,200 / 1,500 / 1,800/ 2,100/ 2,400 x 150 mm and 100mm; Custom heights up to max. 3,000 mm available on enquiry
- Can replace standard paper pads without any problem
- Lower pressure loss compared to paper pads
- Long service life
- Length is flexible (up to 24 m/1 pump). Height max. 2.5 m.
- Quick and easy assembly
- High cooling performance



Double corrugated plastic cooling pad



Single corrugated plastic cooling pad



Single corrugated cross-type plastic cooling pad



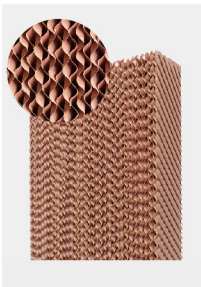
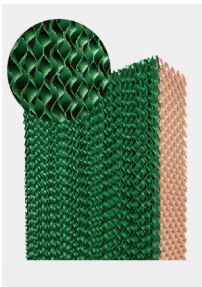
Thickness 150mm 100mm

EVAPORATIVE COOLING PAD

Corrugated cardboard with special treatment, resistant to water immersion, fast diffusion speed, and long-lasting effectiveness;

Has excellent permeability and water absorption, ensuring that water evenly penetrates the entire wet curtain wall;

The specific three-dimensional spatial structure provides the maximum evaporative surface area for heat exchange between water and air;



Product specifications

Model	Height(mm)	Width(mm)	Thickness(mm)	Aperture	Angle
7090	1500/1800/2000/ 自定义	300/600/ custom	100/150/200/ custom	7mm	45°/45°
7060	1500/1800/2000/ 自定义	300/600/ custom	100/150/200/ custom	7mm	15°/45°
5090	custom	custom	custom	5mm	45°/45°

AIR INTAKE SERIES

OTHER PRODUCTS



Wall mounted insulation air inlet



Automatic opening of sidewall air inlet



Multi layer large board air inlet



Ceiling butterfly air inlet



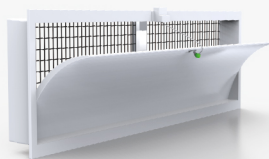
Ceiling butterfly air inlet



Ceiling four-side air inlet



Ceiling insulation air inlet



304 Side wall air inlet



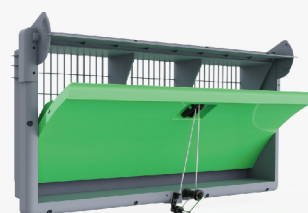
400 Side wall air inlet



Poultry farm air inlet



880 Poultry farm air inlet



980 Poultry farm air inlet



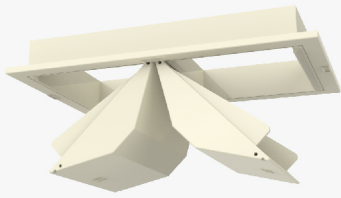
Poultry farm air inlet



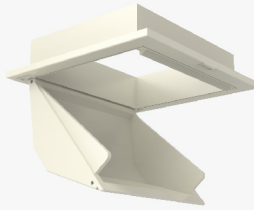
Air inlet rain cover+Light trap



Light trap



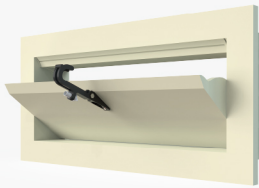
Polyurethane ceiling air inlet



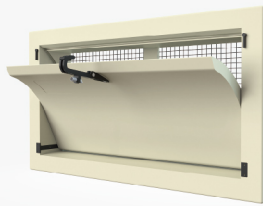
PU Single-Opening Ceiling Air Inlet



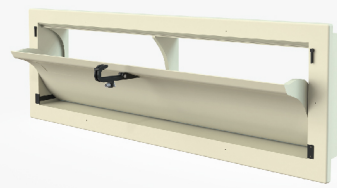
Polyurethane ceiling air inlet



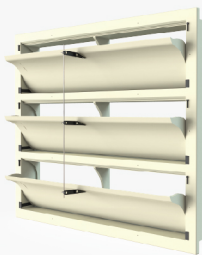
650 Polyurethane side wall air inlet



800 Polyurethane side wall air inlet



1120 Polyurethane side wall air inlet



Polyurethane Multi-Layer Air Inlet



Polyurethane Slide Plate Air Inlet



Polyurethane Chimney Fan



Axial flow high-pressure fan



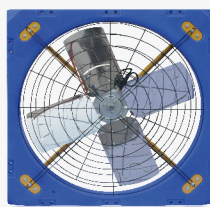
Plastic Fan



Chicken House Deflector



PE calf hutch



PE plastic cowshed fan



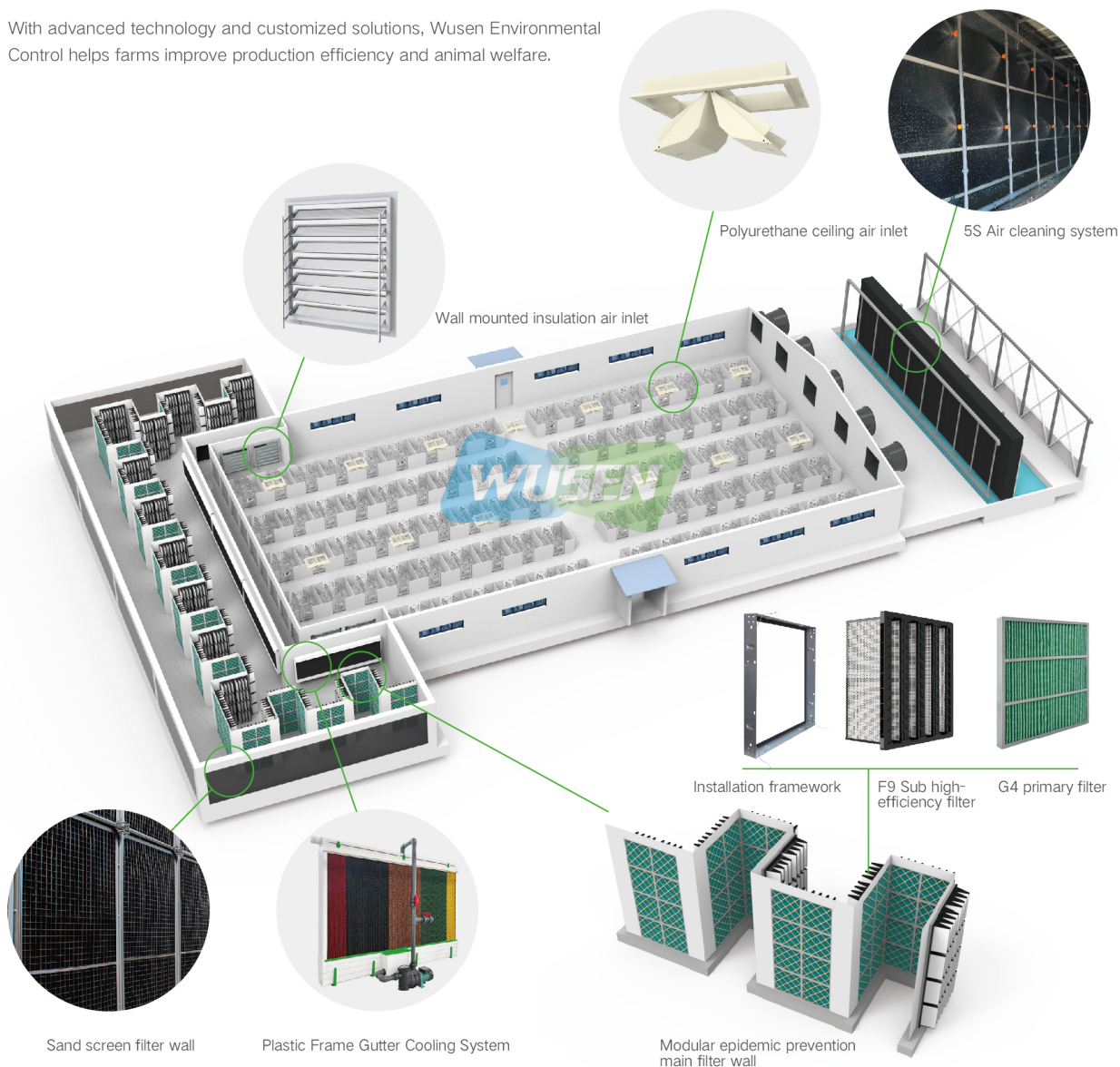
Industrial air cooler

FARM BREEDING ENVIRONMENTAL CONTROL SYSTEM

Wusen Environmental Control provides comprehensive solutions for the environmental control system of the entire livestock farm, including the front-end air filtration system, PVC self-circulating cooling system, and the all-round ventilation system at the middle end (which covers side wall ventilation windows and ceiling-mounted ventilation windows), as well as the full-farm spray disinfection and sterilization system, terminal fans, and the WUSEN 5S air purification and deodorization system.

Wusen Environmental Control supports the automatic management, real-time monitoring and adjustment of environmental parameters.

With advanced technology and customized solutions, Wusen Environmental Control helps farms improve production efficiency and animal welfare.



Website



WeChat

SHANDONG WUSEN ENVIRONMENTAL CONTROL EQUIPMENT TECHNOLOGY CO., LTD

📍 Add: East of Rongli Street, Qingzhou Economic Development Zone, Shandong Province, China

📞 Mobile: (86)156.8989.5555 Whatsapp: +86 156.5367.5558

🌐 English website: www.wusncn.com ✉ E-mail: cnwusen@126.com